

BURLEIGH

ESTD 1851



MADE IN ENGLAND



BURLEIGH

ESTD 1851

Burleigh has been handcrafting its wares in England since 1851 and much of what we do remains unchanged from that date. Each piece of Burleigh is made by hand and mixed with centuries of experience and passion to ensure that the way we make, is still the best way.

Each piece of the process of making Burleigh requires skills and experience that are unique to our craftspeople. These skills cannot be found anywhere else in the world and they are combined with a passion for clay; and a hint of magic. The kind of magic that turns damp and grey clay into something pure, something permanent, something brilliant and something unique.

Our skill, attention to detail and the dedication to preserving a time-honoured craft and tradition is what makes Burleigh, Burleigh. Burleigh is handmade for a reason, because handmade is the best way and we have been proving it for over 170 years.

As we enter our 171st year, we will continue to act as guardian of our craftsmanship and continue making Burleigh's rich and intricate history a part of today's luxury tableware offering; demonstrating true charm in every piece of ware.

The patterns that you see on our ware are created from engraved copper rollers which in themselves are works of art. Used daily to print our designs onto a special tissue paper using a coloured paste that is made up fresh every day.

Copper engraving has been at the heart of every Burleigh design for the last 170 years. Burleigh is now the only business in the world to continue to use engraved copper rollers to decorate ceramics. It is a traditional method that is hidden from view and even some of Burleigh’s most ardent fans will never have seen an exposed copper roller. That’s because every roller is coated in a thin layer of chrome to protect the delicate, soft copper surface.

The way in which the ink is applied to the roller and the levels of depth within each design, allow for tonal variation amongst our wares. This adds layers of texture to each and every design, the dexterity of applying decoration in this way is unmatched and gives a finish that is unrivalled.

Burleigh holds an archive of copper engravings dating back to the very beginning of our 170 year history. From the very earliest such as Asiatic Pheasants, right through to the most recent addition of Pollen, launched in 2020.



Contents

Collection One.....6

 Hibiscus6

 Palisade.....8

 Pollen 10

Blue Arden12

How We Make Burleigh 14

Blue Asiatic Pheasants.....16

Pink Asiatic Pheasants.....18

Blue Calico 20

Pale Blue Felicity 22

Our Story..... 24

Green Regal Peacock 26

Blue Regal Peacock 28

Black Regal Peacock..... 30

Gift Range..... 32

Ink Blue Hibiscus

Hibiscus follows the great floral tradition of Burleigh Pottery with a bold all over cover of double hibiscus flowers and foliage.



Espresso Cup & Saucer
Cup 75ml | 802010011
Saucer | 802010012



Plate x4
26.5cm 10½" | 802040031



Coffee Can & Saucer
Can 175ml | 802010101
Saucer | 802010112



Plate x4
21.5cm 8½" | 802040072



Mug
300ml | 802010600



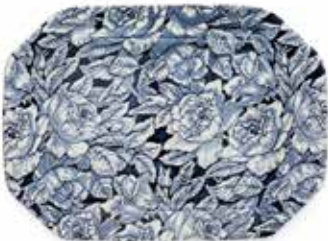
Plate x4
19cm 7½" | 802040004



Tankard Jug
Large 1.1ltre 2pt | 802010415



Footed Bowl
Mini 12cm 5" | 802010017



Rectangular Platter
Large 34cm 13½" | 802010288



Pasta Bowl x4
23cm 9" | 802040044



Footed Bowl
Large 27.5cm 11" | 802010117

Ink Blue Palisade

Representing the beauty and symmetry of microscopic plant cell structures, Palisade’s details are adapted from a Victorian Burleigh archive pattern.



Plate x4
26.5cm 10½" | 803040031



Plate x4
21.5cm 8½" | 803040072



Plate x4
19cm 7½" | 803040004



Pasta Bowl x4
23cm 9" | 803040044



Espresso Cup & Saucer
Cup 75ml | 803010011
Saucer | 803010012



Coffee Can & Saucer
Can 175ml | 803010101
Saucer | 803010112



Mug
300ml | 803010600

Ink Blue Pollen

The first new Burleigh design in a generation, Pollen is an asymmetric honeycomb motif interspersed with bees. Each bee is individually placed, making each piece truly unique.



Espresso Cup & Saucer
Cup 75ml | 804010011
Saucer | 804010012



Plate x4
26.5cm 10½" | 804040031



Coffee Can & Saucer
Can 175ml | 804010101
Saucer | 804010112



Plate x4
21.5cm 8½" | 804040072



Mug
300ml | 804010600



Plate x4
19cm 7½" | 804040004



Tankard Jug
Small 284ml ¼pt | 804010414



Pasta Bowl x4
23cm 9" | 804040044



Tankard Jug
Large 1.1ltre 2 pt | 804010415



Mini Footed Bowl
12cm 5" | 804010017



Rectangular Platter
Large 34cm 13½" | 804010288



Small Footed Bowl
16cm 6" | 804010062



Rectangular Platter
Small 25cm 10" | 804010289

Blue Arden

Dress your table to impress with the cobalt blue hawthorn blossoms of our Burleigh Blue Arden. Our signature blue hues combined with a classic 19th century pattern, each piece is skilfully handcrafted in our English workshop to deliver our famous high quality and finish.

		
Tea Cup & Saucer Cup 187ml ½pt 812010001 Saucer 812010002	Rectangular Tray 28cm 11" 812010076	Plate x4 26.5cm 10" 812040031
		
Breakfast Cup & Saucer Cup 420ml ¾pt 812010040 Saucer 812010022	Rectangular Platter 25cm 10" 812010289	Plate x4 21.5cm 9½" 812040072
		
Mug 284ml ½pt 812010611	Butter Dish 400g 1lb 812010026	Plate x4 19cm 7½" 812040004
		
Sandringham Mug 284ml ½pt 812011611	Tankard Jug Medium 568ml 1pt 812010413	Cereal Bowl x4 16cm 6¼" 812040007
		
Tea Pot Large 800ml 1½pt 812010121 Small 400ml ¾pt 812010122	Tankard Jug Small 284ml ½pt 812010414	Pudding/Soup Bowl x4 20.5cm 8" 812040075
		
Jam Pot / Covered Sugar 250g ½lb 812010064	Tankard Jug Mini 160ml ¼pt 812010412	Pasta Bowl x4 23cm 9" 812040044
		
Sugar Bowl Dia 9.5cm 4" 812011017	Dutch Jug Small 284ml ½pt 812010014	Footed Bowl Medium 20cm 8" 812010061 Small 16cm 6" 812010062 Mini 12cm 5" 812010017
		
Mini Teapot Tray 13.5cm 3½" 812012709	Cow Creamer (Gift Boxed) 150ml ⅓pt 823011213	

Here at Burleigh we use traditional skills and techniques, the highest-quality raw materials and our dedicated team of craftspeople to create our classic and timeless tableware, just like we did 171 years ago.



The first step of our craft is to process the clay from raw ingredients, using original 19th century machinery, to make malleable 'plastic' clay and liquid clay called 'slip'.



The malleable clay can then be pressed into shape to make flatware items, such as plates and bowls. The liquid clay is poured into plaster moulds to form more complex 'holloware' shapes, such as teapots.



Next, the dried clay is carefully sponged and fettled to smooth over the surface. Burleighware is fired three times - the first firing of our pottery is called the biscuit firing. At Burleigh, we use gas kilns and fire at temperatures of over 1000 degrees.



This intricate decorating process begins with printing from an engraved copper roller onto very fine tissue paper. The paper rolls off the printing machine in continuous sheets, which are ripped to size by our highly skilled printer, who then hangs each print on a line and sends it down the room to waiting transferrers.



Each transferrer then expertly hand cuts each design to size and places onto biscuitware shapes. Once the design is applied, it is rubbed in to place with a brush and soft soap; transferring the elegant Burleigh pattern from the tissue to the pottery. The tissue paper is then washed away to leave only the printed design on the pottery.



The piece is then fired for a second time, and then the shape is coated in glaze and fired for a final time, bringing out the rich tonal colours in our patterns and providing a smooth glossy finish to the surface. Our wares are handmade in England using these traditional techniques to give them a unique subtlety and individuality that modern methods lack.



Blue Asiatic Pheasants

Hailed as a timeless Burleigh classic, our Blue Asiatic Pheasants collection launched in 1862. The intricate soft blue flowers of this quintessential design bring elegance and elevate dining at home from breakfast right through to supper.



Espresso Cup & Saucer
Cup 75ml | 813010011
Saucer | 813010012



Tea Cup & Saucer
Cup 187ml 3/4pt | 813010001
Saucer | 813010002



Breakfast Cup & Saucer
Cup 420ml 1 3/4pt | 813010040
Saucer | 813010022



Mini Mug
140ml | 813010402



Mug
284ml 1/2pt | 813010611
375ml 3/4pt | 813010612



Sandringham Mug
284ml 1/2pt | 813011611



Tea Pot
Large 800ml 1 1/2pt | 813010121
Small 400ml 3/4pt | 813010122



Tankard Jug
Large 1.1 litre 2pt | 813010415



Tankard Jug
Medium 568ml 1pt | 813010413



Tankard Jug
Small 284ml 1/2pt | 813010414
Mini 160ml 1/4pt | 813010412



Mini Tot
20ml | 813019069



Dutch Jug
Small 284ml 1/2pt | 813010014



Etruscan Jug
Small 1.1litre 2pt | 813010114



Etruscan Jug
Large 2.2litre 4pt | 813010115



Three Tiered Cake Stand (Gift Boxed)
813047055



Two Tiered Cake Stand (Gift Boxed)
813040050



Butter Dish
400g 1lb | 813010026



Soup Tureen & Ladle
31cm 12" | 813013632



Cow Creamer (Gift Boxed)
150ml 1/4pt | 823011013



Jam Pot / Covered Sugar
250g 1/2lb | 813010064



Rectangular Tray
28cm 11" | 813010076



Rectangular Platter
Large 34cm 13 1/2" | 813010288
Small 25cm 10" | 813010289



Footed Bowl
Large 28cm 11" | 813010060



Footed Bowl
Medium 20cm 8" | 813010061



Footed Bowl
Small 16cm 6" | 813010062



Footed Bowl
Mini 12cm 5" | 813010017



Sugar Bowl
Dia 9.5cm 4" | 813011017



Mini Teapot Tray
13.5cm 3 1/2" | 813012709



Plate x4
25.5cm 10" | 813040005



Plate x4
22cm 9" | 813040073



Plate x4
17.5cm 7" | 813040003



Butter Pat
12cm 5" | 813011026



Cereal Bowl x4
16cm 6 1/4" | 813040007



Pudding/Soup Bowl x4
20.5cm 8" | 813040075



Pasta Bowl x4
23cm 9" | 813040044

Pink Asiatic Pheasants

A classic pattern re-imagined in shades of pink. Our Burleigh Pink Asiatic Pheasants collection radiates romance, bringing enchantment with each and every serving. From candlelit dinners to afternoon tea, the delicate motifs will add splendour to the table.



Tea Cup & Saucer
Cup 187ml ⅜pt | 820010001
Saucer | 820010002



Breakfast Cup & Saucer
Cup 420ml ¾pt | 820010040
Saucer | 820010022



Mini Mug
140ml | 820010402



Mug
284ml ⅜pt | 820010611



Tea Pot
Large 800ml 1½pt | 820010121
Small 400ml ¾pt | 820010122



Tankard Jug
Medium 568ml 1pt | 820010413



Tankard Jug
Small 284ml ⅜pt | 820010414



Tankard Jug
Mini 160ml ¼pt | 820010412



Rectangular Tray
28cm 11" | 820010076



Rectangular Platter
Small 25cm 10" | 820010289



Mini Teapot Tray
13.5cm 3½" | 820012709



Cow Creamer (Gift Boxed)
150ml ¼pt | 823011613



Three Tiered Cake Stand (Gift Boxed)
820047055



Two Tiered Cake Stand (Gift Boxed)
820040050



Plate x4
25.5cm 10" | 820040005



Plate x4
22cm 9" | 820040073



Plate x4
17.5cm 7" | 820040003



Sugar Bowl
Dia 9.5cm 4" | 820011017



Footed Bowl
Mini 12cm 5" | 820010017



Cereal Bowl x4
16cm 6¼" | 820040007



Pudding/Soup Bowl x4
20.5cm 8" | 820040075



Pasta Bowl x4
23cm 9" | 820040044

Blue Calico

Calico was first written into the Burleigh pattern book in 1968 and has been in continuous production since. Inspired by 19th-century indigo fabric, the rich cobalt blue tones and scrolling blossom design complement both casual family dining and special occasions alike.



Espresso Cup & Saucer
Cup 75ml | 815010011
Saucer | 815010012



Tea Cup & Saucer
Cup 187ml ½pt | 815010001
Saucer | 815010002



Breakfast Cup & Saucer
Cup 420ml ¾pt | 815010040
Saucer | 815010022



Mini Mug
140ml | 815010402



Mug
284ml ½pt | 815010611
375ml ¾pt | 815010612



Sandringham Mug
284ml ½pt | 815011611



Tea Pot
Large 800ml 1½pt | 815010121



Tea Pot
Small 400ml ¾pt | 815010122



Tankard Jug
Large 1.1litre 2pt | 815010415



Tankard Jug
Medium 568ml 1pt | 815010413



Tankard Jug
Small 284ml ½pt | 815010414



Tankard Jug
Mini 160ml ¼pt | 815010412



Mini Tot
20ml | 815019069



Cow Creamer (Gift Boxed)
150ml ¼pt | 823011413



Mini Teapot Tray
13.5cm 3½" | 815012709



Three Tiered Cake Stand (Gift Boxed)
815047055



Two Tiered Cake Stand (Gift Boxed)
815040050



Dutch Jug
Small 284ml ½pt | 815010014



Etruscan Jug
Small 1.1litre 2pt | 815010114



Etruscan Jug
Large 2.2litre 4pt | 815010115



Footed Bowl
Large 27.5cm 11" | 815010060



Footed Bowl
Medium 20cm 8" | 815010061



Footed Bowl
Small 16cm 6¼" | 815010062



Footed Bowl
Mini 12cm 5" | 815010017



Sugar Bowl
Dia 9.5cm 4" | 815011017



Jam Pot / Covered Sugar
250g ½lb | 815010064



Butter Dish
400g 1lb | 815010026



Plate x4
26.5cm 10½" | 815040031



Plate x4
21.5cm 8½" | 815040072



Plate x4
19cm 7½" | 815040004



Butter Pat
12cm 4¾" | 815011026



Cereal Bowl x4
16cm 6½" | 815040007



Pudding/Soup Bowl x4
20.5cm 8" | 815040075



Pasta Bowl x4
568ml 1pt | 815040044

Pale Blue Felicity

Reminiscent of the delicate spray of elderflowers, Blue Felicity brings the beauty of the British countryside to the dinner table. Perfect for special occasions, but durable and practical enough for everyday use, allowing you to elevate each meal with the delicate foliage of Blue Felicity.



Espresso Cup & Saucer
Cup 75ml | 819010011
Saucer | 819010012



Tea Cup & Saucer
Cup 187ml 1/4pt | 819010001
Saucer | 819010002



Breakfast Cup & Saucer
Cup 420ml 3/4pt | 819010040
Saucer | 819010022



Mini Mug
140ml | 819010402



Mug
284ml 1/2pt | 819010611



Sandringham Mug
284ml 1/2pt | 819011611



Tea Pot
Large 800ml 1 1/2pt | 819010121



Tea Pot
Small 400ml 3/4pt | 819010122



Tankard Jug
Medium 568ml 1pt | 819010413



Tankard Jug
Small 284ml 1/2pt | 819010414



Tankard Jug
Mini 160ml 1/4pt | 819010412



Mini Tot
20ml | 819019069



Dutch Jug
Small 284ml 1/2pt | 819010014



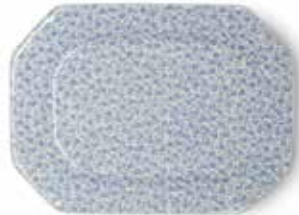
Jam Pot / Covered Sugar
250g 1/2lb | 819010064



Mini Teapot Tray
13.5cm 3 1/2" | 819012709



Rectangular Tray
28cm 11" | 819010076



Rectangular Platter
25cm 10" | 819010289



Footed Bowl
Medium 20cm 8" | 819010061



Footed Bowl
Small 16cm 6" | 819010062



Footed Bowl
Mini 12cm 5" | 819010017



Sugar Bowl
9.5cm 4" | 819011017



Butter Dish
400g 1lb | 819010026



Cow Creamer (Gift Boxed)
150ml 1/4pt | 823011513



Plate x4
26.5cm 10 1/2" | 819040031



Plate x4
21.5cm 8 1/2" | 819040072



Plate x4
19cm 7 1/2" | 819040004



Cereal Bowl x4
16cm 6 1/4" | 819040007



Pudding/Soup Bowl x4
20.5cm 8" | 819040075



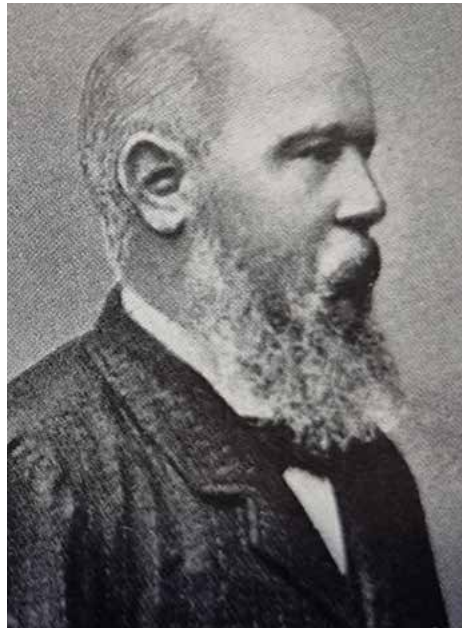
Pasta Bowl x4
23cm 9" | 819040044



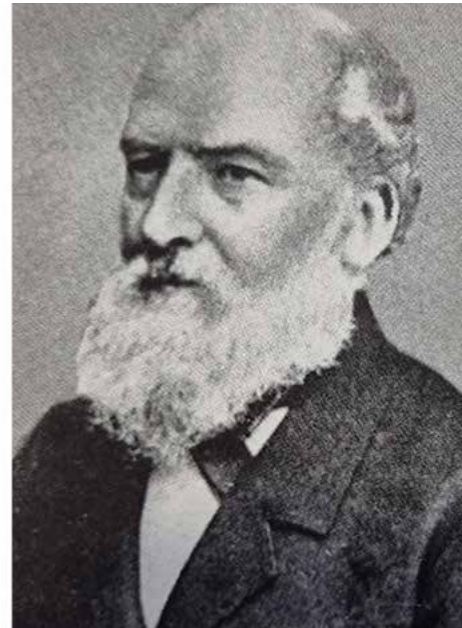
Two Tiered Cake Stand (Gift Boxed)
819040050

'In July of 1851 'Hulme & Booth' founded a business manufacturing Earthenware in the centre of the 'Mother Town' of the Staffordshire potteries Burslem. Little is known about the lives of Mr Booth and Thomas Hulme however but the company was successful for over a decade, when eleven years later Frederick Rathbone Burgess and William Leigh formed a partnership taking over from Hulme & Booth renaming the company to suit. Their combined skills meant that 'Burgess & Leigh' were set apart from the myriad of manufacturers in the area around this time.

Frederick Rathbone Burgess was a man with great business acumen, and William Leigh had been working in the Potteries industry from childhood. The combination of creative and practical talent meant that the company was built upon solid foundations. William Leigh was well known amongst the people of the area as a fair and kind spirited man. He understood the importance of running a factory whilst considering the welfare of its workers. He himself had known what it was like to work long hours and was seen as a fair employer in what was a difficult and sometimes dangerous environment.



Frederick Rathbone Burgess



William Leigh

In 1888 growth of the company meant a new more suitable home was needed for this flourishing business so the owners commissioned the purpose built factory on the banks of the Trent & Mersey Canal that remains home to the company right up to the present day, Middleport Pottery, which was known for being a 'model factory', replete with the most modern technology and a specially designed layout to help the flow of the ware through the factory. As the business continued to go from strength to strength in the new century, the introduction of a new pattern formed from a portmanteau of the founders names 'Burleigh' in 1903 gave rise to a new brand name which is now known worldwide as a true icon of British luxury and design.

As the company made the short move from the centre of Burslem to the newly built Middleport Pottery William Leigh sadly died, he never got to see the great success that was to come. Frederick his son Richard Burgess along with Williams son Edmund Leigh took up the challenge of running the new factory, which became known locally as the 'Seven Oven works' thanks to huge bottle ovens which loomed over the skyline. One of which is still intact.

As with most people growing up in Staffordshire in the 1800's; both founders came from families of potters; so maybe their future occupations were somewhat inevitable. Little did they know what a huge impact they would have upon the history of the industry, and all these years later all of us here at Burleigh continue to act as guardians to the great legacy that goes before us.



Green Regal Peacock

A Burleigh classic re-imagined in rich tonal green. Green Regal Peacock is a contemporary update to a time-honoured design; introduced during our 170th year to celebrate our craftsmanship, heritage and charm.



Plate x4
25cm 10" | 805040005



Plate x4
22cm 9" | 805040073



Plate x4
17.5cm 7" | 805040003



Footed Mug (Gift Boxed)
300ml | 805010041



Pudding/Soup Bowl x4
20.5cm 8" | 805040075



Pasta Bowl x4
23cm 9" | 805040044

Blue Regal Peacock

Regal by name and regal by nature, the exquisite Blue Regal Peacock collection from Burleigh caught the eye of Queen Mary when it launched in 1913 and has been turning heads ever since. Each piece is handmade in England and adorned in rich shades of blue, for the unrivalled quality that Burleigh is renowned for.



Espresso Cup & Saucer
Cup 75ml | 842010011
Saucer | 842010012



Tea Cup & Saucer
Cup 187ml 1/2pt | 842010001
Saucer | 842010002



Breakfast Cup & Saucer
Cup 420ml 3/4pt | 842010040
Saucer | 842010022



Mini Mug
140ml | 842010402



Mug
284ml 1/2pt | 842010611



Tea Pot
Large 500ml 1pt | 842010121



Jam Pot / Covered Sugar
480g 1lb | 842010017



Tankard Jug
Medium 568ml 1pt | 842010413



Etruscan Jug
Small 1.1litre 2pt | 842010114



Etruscan Jug
Large 2.2litre 4pt | 842010115



Cream Jug
255ml 1/2pt | 842012015



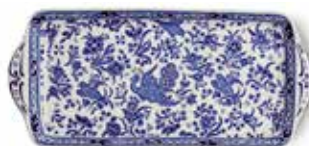
Cow Creamer (Gift Boxed)
150ml 1/4pt | 842011013



Soup Tureen & Ladle
31cm 12" | 842013632



Foot Bath
44cm 17" | 842011349



Rectangular Tray
28cm 11" | 842010076



Rectangular Platter
Large 34cm 13 1/2" | 842010288



Three Tiered Cake Stand (Gift Boxed)
842047055



Two Tiered Cake Stand (Gift Boxed)
842040050



Mini Teapot Tray
13.5cm 3 1/2" | 842012709



Sugar Bowl
Dia 9.5cm 4" | 842011017



Mini Footed Bowl
Dia 12cm 5" | 842010016



Plate x4
25cm 10" | 842040005



Plate x4
22cm 9" | 842040073



Plate x4
17.5cm 7" | 842040003



Cereal Bowl x4
16cm 6 1/4" | 842040007



Pudding/Soup Bowl x4
20.5cm 8" | 842040075



Pasta Bowl x4
23cm 9" | 842040044



Octagonal Bowl
Medium 20.5cm 8" | 842010767

Black Regal Peacock

Striking oriental bird motifs paired with deep tones are the perfect classic combination. First introduced in 1913 and revived a century later, Black Regal Peacock continues to bring regal charm to every occasion.



Espresso Cup & Saucer
Cup 75ml | 855010011
Saucer | 855010012



Tea Cup & Saucer
Cup 187ml 1/4pt | 855010001
Saucer | 855010002



Breakfast Cup & Saucer
Cup 420ml 3/4pt | 855010040
Saucer | 855010022



Mini Mug
140ml | 855010402



Mug
284ml 1/2pt | 855010611



Tea Pot
Large 500ml 1pt | 855010121



Jam Pot / Covered Sugar
480g 1lb | 855010017



Tankard Jug
Mini 160ml | 855010412
Medium 568ml 1pt | 855010413



Etruscan Jug
Small 1.1litre 2pt | 855010114



Etruscan Jug
Large 2.2litre 4pt | 855010115



Cream Jug
255ml 1/2pt | 855012015



Cow Creamer (Gift Boxed)
150ml 1/4pt | 855011013



Soup Tureen & Ladle
31cm 12" | 855013632



Foot Bath
44cm 17" | 855011349



Rectangular Tray
28cm 11" | 855010076



Rectangular Platter
Large 34cm 13 1/2" | 855010288



Three Tiered Cake Stand (Gift Boxed)
855047055



Two Tiered Cake Stand (Gift Boxed)
855040050



Mini Teapot Tray
13.5cm 3 1/2" | 855012709



Sugar Bowl
Dia 9.5cm 4" | 855011017



Mini Footed Bowl
Dia 12cm 5" | 855010016



Plate x4
25cm 10" | 855040005



Plate x4
22cm 9" | 855040073



Plate x4
17.5cm 7" | 855040003



Cereal Bowl x4
16cm 6 1/4" | 855040007



Pudding/Soup Bowl x4
20.5cm 8" | 855040075



Pasta Bowl x4
23cm 9" | 855040044



Octagonal Bowl
Medium 20.5cm 8" | 855010767

Gift Range

Helping our consumers make a conscious choice when it comes to gifting and developed with the environment in mind, each of our giftboxes complete the perfect gift and continue telling the story of our heritage and craftsmanship. Each box is made from corrugated cardboard and is free from any glue or adhesives making it 100% recyclable.



Cow Creamer

AVAILABLE IN:
Blue Arden | 823011213
Blue Asiatic Pheasants | 823011013
Pink Asiatic Pheasants | 823011613
Blue Calico | 823011413
Pale Blue Felicity | 823011513
Blue Regal Peacock | 842011013
Black Regal Peacock | 855011013



Three Tiered Cake Stand

AVAILABLE IN:
Blue Asiatic Pheasants | 813047055
Pink Asiatic Pheasants | 820047055
Blue Calico | 815047055
Blue Regal Peacock | 842047055
Black Regal Peacock | 855047055
Mixed | 823047053 (Blue Asiatic Pheasants, Blue Felicity & Blue Calico)



Three Piece Teacup Gift Set
(Teacup, Saucer & Small Plate)

AVAILABLE IN:
Blue Arden | 812040752
Blue Asiatic Pheasants | 813045056
Pink Asiatic Pheasants | 820040752
Blue Calico | 815045056
Pale Blue Felicity | 819040752
Blue Regal Peacock | 842040752
Black Regal Peacock | 855045056



Teapot
Small Teapot

AVAILABLE IN:
Blue Arden | 812040754
Blue Calico | 815045222
Blue Asiatic Pheasants | 813045222
Pink Asiatic Pheasants | 820040754
Pale Blue Felicity | 819040754

Large Teapot

AVAILABLE IN:
Blue Regal Peacock | 842045221
Black Regal Peacock | 855045221



Two Tiered Cake Stand

AVAILABLE IN:
Blue Asiatic Pheasants | 813040050
Pink Asiatic Pheasants | 820040050
Blue Calico | 815040050
Pale Blue Felicity | 819040050
Blue Regal Peacock | 842040050
Black Regal Peacock | 855040050



Three Piece Breakfast Cup Gift Set
(Breakfast Cup, Saucer & Small Plate)

AVAILABLE IN:
Blue Arden | 812040753
Blue Asiatic Pheasants | 813045057
Pink Asiatic Pheasants | 820040753
Blue Calico | 815040753
Pale Blue Felicity | 819040753
Blue Regal Peacock | 842040753
Black Regal Peacock | 855045057



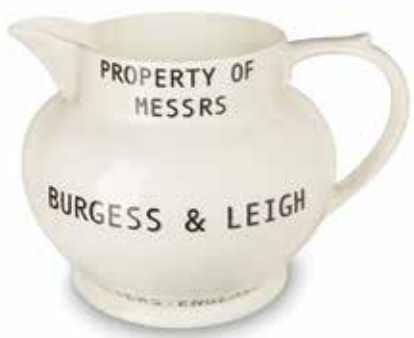
Footed Mug
Green Regal Peacock | 805010041



Kiln Ring Decoration
Green Regal Peacock | 805018003
Blue Regal Peacock | 842018003
Burgundy Regal Peacock | 806018003



Modellers Decoration
Green Regal Peacock | 805018008
Blue Regal Peacock | 842018008
Burgundy Regal Peacock | 806018008



Casters Jug
8ltrs 14pt | 854010116

BURLEIGH

ESTD 1851

Trade customers can contact us on

01773 740740

order by fax:

01773 740740

or by email:

customerservices@burgessandleigh.co.uk

Address for correspondence:

Burgess and Leigh, Pottery Lane
Denby, Derbyshire. DE5 8NX UK

Private customers can contact our retail team on:

factoryshop@burgessandleigh.co.uk

Or visit us in our factory shop:

Middleport Pottery, Port Street, Burslem,
Stoke-on-Trent. ST6 3PE UK

www.burleigh.co.uk



@burleighpottery



/Burleigh.Pottery



@burleighpottery

2021-TB 089099156

MADE IN ENGLAND

